

# TOMAHAWK CRANES

TOMAHAWKCRANES.COM.AU

LITTLE CRANES WITH  
**BIG IDEAS**



*follow us* →

📷 @tomahawkcranes | M 0407 681 181 | E info@tomahawkcranes.com.au

T. MILJKO PTY LTD ABN: 31 447 392 173 ACN: 629 249 234

## Total Rated Load Chart

Total rated load Outriggers at Maximum position							
5.945m boom		8.145m boom		10.315m boom		12.485m boom	
Working radius (m)	Total rated load (kg)	Working radius (m)	Total rated load (kg)	Working radius (m)	Total rated load (kg)	Working radius (m)	Total rated load (kg)
< 2.5	2980	2.7	2270	4.0	1080	< 4.5	790
3.0	2390	3.0	2120	4.5	985	5.0	660
3.5	1990	3.5	1680	5.0	880	6.0	520
4.0	1710	4.0	1440	6.0	770	7.0	430
4.5	1490	4.5	1260	7.0	670	8.0	380
5.0	1340	5.0	1110	8.0	570	9.0	340
5.62	1160	5.5	990	9.0	500	10.0	310
		6.0	880	9.99	435	11.0	280
		7.0	730			12.16	260
		7.82	630				

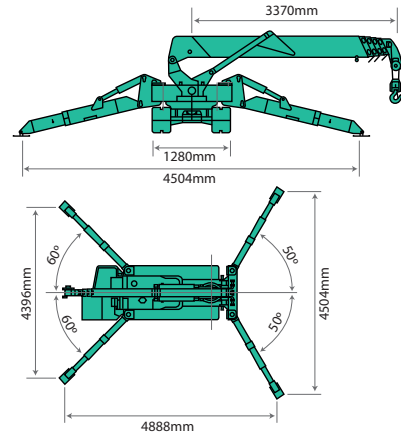
Total rated load Outriggers at Intermediate position							
5.945m boom		8.145m boom		10.315m boom		12.485m boom	
Working radius (m)	Total rated load (kg)	Working radius (m)	Total rated load (kg)	Working radius (m)	Total rated load (kg)	Working radius (m)	Total rated load (kg)
< 2.5	2980	2.7	2270	4.0	1060	< 4.5	780
3.0	2390	3.0	2090	4.5	950	5.0	650
3.5	1960	3.5	1680	5.0	860	6.0	500
4.0	1680	4.0	1420	6.0	750	7.0	410
4.5	1380	4.5	1240	7.0	630	8.0	360
5.0	1140	5.0	1070	8.0	490	9.0	320
5.62	950	5.5	950	9.0	410	10.0	290
		6.0	800	9.99	350	11.0	260
		7.0	610			12.16	250
		7.82	520				

Total rated load Outriggers at Minimum position							
5.945m boom		8.145m boom		10.315m boom		12.485m boom	
Working radius (m)	Total rated load (kg)	Working radius (m)	Total rated load (kg)	Working radius (m)	Total rated load (kg)	Working radius (m)	Total rated load (kg)
< 2.5	2980	2.7	2270	4.0	1060	< 4.5	780
3.0	2350	3.0	2090	4.5	950	5.0	650
3.5	1800	3.5	1680	5.0	860	6.0	500
4.0	1430	4.0	1370	6.0	680	7.0	410
4.5	1140	4.5	1120	7.0	530	8.0	360
5.0	950	5.0	910	8.0	420	9.0	320
5.62	790	5.5	790	9.0	340	10.0	290
		6.0	670	9.99	300	11.0	240
		7.0	510			12.16	210
		7.82	430				

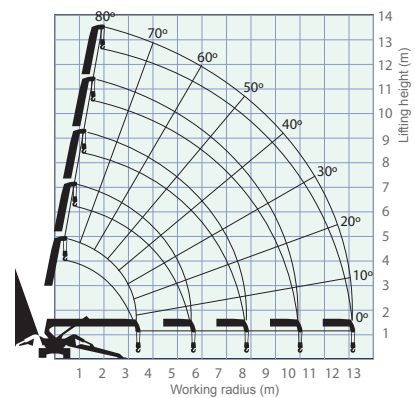
The Total Rated Load Charts are based on the actual working radius including boom deflection. The weight of the hook (standard 4 fall - 30kg) must be included as part of the load shown in the Total Rated Load Charts.

When using two fall or single fall hooks, use the appropriate four fall Total Rated Load Chart above but with a **maximum load** of: Two Fall - 1480kg, Single Fall - 750kg.

## Outrigger Spread Dimensions



## Working Range Chart

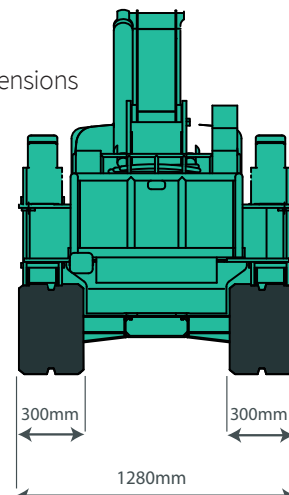
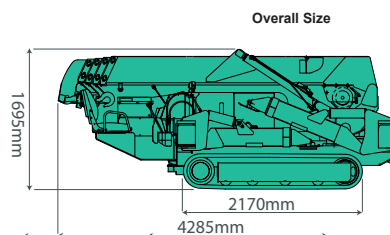


The Working Range Chart does not take into account boom deflection under load.

The maximum reach below ground level is:

Four Fall	Two Fall	Single Fall
16.09m	32.18m	64.36m

## Dimensions



MC305C-2 OPERATING RANGE for 850kg SEARCHER HOOK		RATED TOTAL LOAD CHART for 850kg SEARCHER HOOK																		
		The unit of loads : kg																		
OFFSET POSITION SH1		① 3.695m BOOM		② 5.945m BOOM			③ 8.145m BOOM			④ 10.315m BOOM			⑤ 12.485m BOOM			Working Radius (m)				
		BOOM FULLY RETRACTED		WHEN BOOM 2 IS EXTENDED TO ANY EXTENT, USE RATINGS FOR 3.695m-5.945m BOOM			WHEN BOOM 3 IS EXTENDED TO ANY EXTENT, USE RATINGS FOR 5.945m-8.145m BOOM			WHEN BOOM 4 IS EXTENDED TO ANY EXTENT, USE RATINGS FOR 8.145m-10.315m BOOM			WHEN THE MARK 1 ON BOOM 4 IS EXPOSED, USE RATINGS FOR 10.315m-12.485m BOOM							
		LOADED BOOM ANGLE (deg)	OUTRIGGER POSITION		LOADED BOOM ANGLE (deg)	OUTRIGGER POSITION		LOADED BOOM ANGLE (deg)	OUTRIGGER POSITION		LOADED BOOM ANGLE (deg)	OUTRIGGER POSITION		LOADED BOOM ANGLE (deg)	OUTRIGGER POSITION					
			MAX	MID	MIN	MAX	MID	MIN	MAX	MID	MIN	MAX	MID	MIN	MAX		MID	MIN		
		3.5	29.5	850	850	850	30.0 OR MORE	RESTRICTED			RESTRICTED			RESTRICTED			3.5			
		4.3	0.0	850	850	850	3.0	850	850	850	30.0 OR MORE	RESTRICTED			RESTRICTED			4.3		
		5.5					29.0	850	850	850									5.5	
		6.5					3.0	850	740	610									6.5	
		7.4									29.5	660	560	460					7.4	
		8.0									21.0	590	470	380					8.0	
8.7									3.0	530	430	350				8.7				
9.3													29.0	450	370	310	9.3			
10.5													13.5	390	310	260	10.5			
10.9													0.0	370	290	240	10.9			
11.2																	11.2			
12.0																	12.0			
13.06																	13.06			
OFFSET POSITION SH2		① 3.695m BOOM		② 5.945m BOOM			③ 8.145m BOOM			④ 10.315m BOOM			⑤ 12.485m BOOM			Working Radius (m)				
		BOOM FULLY RETRACTED		WHEN BOOM 2 IS EXTENDED TO ANY EXTENT, USE RATINGS FOR 3.695m-5.945m BOOM			WHEN BOOM 3 IS EXTENDED TO ANY EXTENT, USE RATINGS FOR 5.945m-8.145m BOOM			WHEN BOOM 4 IS EXTENDED TO ANY EXTENT, USE RATINGS FOR 8.145m-10.315m BOOM			WHEN THE MARK 1 ON BOOM 4 IS EXPOSED, USE RATINGS FOR 10.315m-12.485m BOOM							
		LOADED BOOM ANGLE (deg)	OUTRIGGER POSITION		LOADED BOOM ANGLE (deg)	OUTRIGGER POSITION		LOADED BOOM ANGLE (deg)	OUTRIGGER POSITION		LOADED BOOM ANGLE (deg)	OUTRIGGER POSITION		LOADED BOOM ANGLE (deg)	OUTRIGGER POSITION					
			MAX	MID	MIN	MAX	MID	MIN	MAX	MID	MIN	MAX	MID	MIN	MAX		MID	MIN		
		2.7	54.5	850	850	850	67.5	850	850	850	73.0	850	850	850					2.7	
		4.0	27.0	850	850	850	54.5	850	850	850	64.0	850	850	850	76.5		850	850	850	4.0
		4.3	13.0	850	850	850	51.5	850	850	850	63.0	850	850	850	68.0		850	850	850	4.3
		4.5					49.0	850	850	850	60.5	850	850	850	66.5		850	850	850	4.5
		5.0					43.0	850	850	850	56.5	850	850	850	64.0		850	830	830	5.0
		6.0					27.0	850	850	740	48.5	850	820	680	58.0		710	700	660	6.0
6.6					3.0	850	710	580	43.0	770	680	570	54.0	660	650	570	6.6			
7.0									39.0	720	620	520	51.5	630	600	520	7.0			
8.0									26.5	590	470	380	44.5	550	490	410	8.0			
8.8									3.0	520	420	340	38.0	480	410	340	8.8			
10.0													26.0	410	330	270	10.0			
11.0													8.0	360	280	240	11.0			
12.0																	12.0			
13.13																	13.13			
OFFSET POSITION SH3		① 3.695m BOOM		② 5.945m BOOM			③ 8.145m BOOM			④ 10.315m BOOM			⑤ 12.485m BOOM			Working Radius (m)				
		BOOM FULLY RETRACTED		WHEN BOOM 2 IS EXTENDED TO ANY EXTENT, USE RATINGS FOR 3.695m-5.945m BOOM			WHEN BOOM 3 IS EXTENDED TO ANY EXTENT, USE RATINGS FOR 5.945m-8.145m BOOM			WHEN BOOM 4 IS EXTENDED TO ANY EXTENT, USE RATINGS FOR 8.145m-10.315m BOOM			WHEN THE MARK 1 ON BOOM 4 IS EXPOSED, USE RATINGS FOR 10.315m-12.485m BOOM							
		LOADED BOOM ANGLE (deg)	OUTRIGGER POSITION		LOADED BOOM ANGLE (deg)	OUTRIGGER POSITION		LOADED BOOM ANGLE (deg)	OUTRIGGER POSITION		LOADED BOOM ANGLE (deg)	OUTRIGGER POSITION		LOADED BOOM ANGLE (deg)	OUTRIGGER POSITION					
			MAX	MID	MIN	MAX	MID	MIN	MAX	MID	MIN	MAX	MID	MIN	MAX		MID	MIN		
		2.5	60.0	850	850	850	72.0	850	850	850	75.5	850	850	850					2.5	
		2.7	56.5	850	850	850	70.0	850	850	850	73.5	850	850	850					2.7	
		3.0	50.5	850	850	850	67.0	850	850	850	67.5	850	850	850					3.0	
		3.8	25.0	850	850	850	58.0	850	850	850	67.5	850	850	850					3.8	
		4.0					56.0	850	850	850	66.0	850	850	850	71.0		850	850	850	4.0
		4.5					49.5	850	850	850	62.0	850	850	850	68.5		850	850	850	4.5
5.0					42.5	850	850	850	58.0	850	850	850	65.5	850	830	830	5.0			
6.1					13.0	850	830	710	48.0	840	800	660	58.5	700	690	640	6.1			
7.0									38.0	720	620	520	52.0	630	600	520	7.0			
8.3									9.0	560	450	370	42.0	520	460	380	8.3			
9.0													35.0	470	390	330	9.0			
10.4													11.5	390	310	260	10.4			
11.0																	11.0			
12.63																	12.63			

### ⚠ DANGER

### TIPPING HAZARD

- When using searcher hook, Moment limiter "number of fall" must be set to 850kg searcher hook mode, and select searcher hook offset position.
- Before start working, always make sure moment limiter is correctly set to the actual working condition.
- Do not use searcher hook and main hoist hook block/ball simultaneously to hoist load.

### Notes:

- This Rated Total Load Chart shows maximum allowable capacities. These rated total loads are based on the machine standing level on a firm ground supporting surface, under ideal job conditions and a freely suspended load.
- Sufficient design tolerance must be used to ensure adequate ground support surface design. The rated total loads are for static conditions only, and do not include dynamic effects of slewing, extending, retracting, lowering, raising, wind or adverse conditions. Crane users must reduce rated total loads ratings to take all conditions into account.
- The working radius shown in the Rated Total Load Chart is based on practical working radius including boom deflection due to loading. The crane user must calculate and compensate for boom deflection as the load is lifted.
- Deductions from Searcher Hook Rated Total Load must be made for the weight of the searcher hook, block/ball and all rigging.
- All capacities above the bold line are based on structural strength and other limitations. All other rated total loads are based on stability, not exceeding 75% of tipping loads.
- Crane users must consult the Operators Manual for complete details about assembly, operation, maintenance, configuration, and its limitations. Modifications to the crane, other than what is specified or supplied by the original equipment manufacturer, can result in a reduction of rated total load ratings.
- This operating range chart does not include boom deflections.
- At certain working conditions, moment limiter may display bigger load value than actual load.
- RESTRICTED AREA : At high boom angles, E-Boom (arm) and the hook will interfere with each other.
- To avoid this interference : In SH1 position, do not operate above 30 degree boom angle.

## Specifications

Model		MC305C-2
<b>Crane capacity</b>		2.98t x 2.5m
<b>Max. working radius</b>		12.16m
<b>Max. lifting height</b>		12.52m
<b>Hook speed</b>		13.5m / min. (4 falls, 4th layer)
<b>Single line speed</b>		54m / min. (4th layer)
<b>Hoist rope</b>		IWRC 6 x WS(26) 8mm x 73m
<b>Telescopic system</b>	Boom length	3.695m - 12.485m
	Telescoping speed	8.79m / 38 sec. (26 sec.)
	Boom type	Fully automatic 5 section pentagonal telescopic boom
<b>Boom hoist system</b>	Hoist angle / speed	0 - 80° / 21 sec. (14.5 sec.)
<b>Slew system</b>	Slew angle / speed	360° / 2.4 rpm (1.7 rpm)
<b>Outrigger system</b>	Type	Extension and set up by direct acting hydraulic cylinders
	Maximum extended dimensions	(Length) 4888mm x (Front) 4504mm x (Rear) 4396mm
<b>Traction system</b>	Drive	Hydraulic motor driven, stepless speed changer
	Travel speed	0 - 2.8 km/h (1.3 km/h)
	Gradability	23°
	Crawler length x width	1750mm x 300mm
	Ground pressure	36.3 kpa (0.37 kgf/cm <sup>2</sup> )
<b>Engine</b>	Model	Yanmar 3TNV76
	Type	3 cylinder water cooled diesel, 1.15 litre.
	Rated output	15.2kw / 2500min <sup>-1</sup> (20.7PS/2500rpm)
	Starting method	Electric
	Fuel/Fuel tank capacity	Diesel / 40L
<b>Remote control system</b>	Type	Cable remote controller, micro-speed mode, load display for transmitter, outrigger operation
<b>Dimensions</b>	Length x Width x Height	4285mm x 1280mm x 1695mm
	Weight MC305C-2	3900kg
<b>Standard equipment</b>		Overwind protection, load indicator, hydraulic safety valve, wire rope latch, level, machine body inclination alarm, EMO switch, travel lock lever, outrigger interlock device, moment limiter, rotary lamp, hour-meter, 4-fall / 2-fall hook block

